



Family Learning
COMMUNITY
Nebraska

Connecting the Dots

Expanding Your Reach with Asset Mapping



Agenda



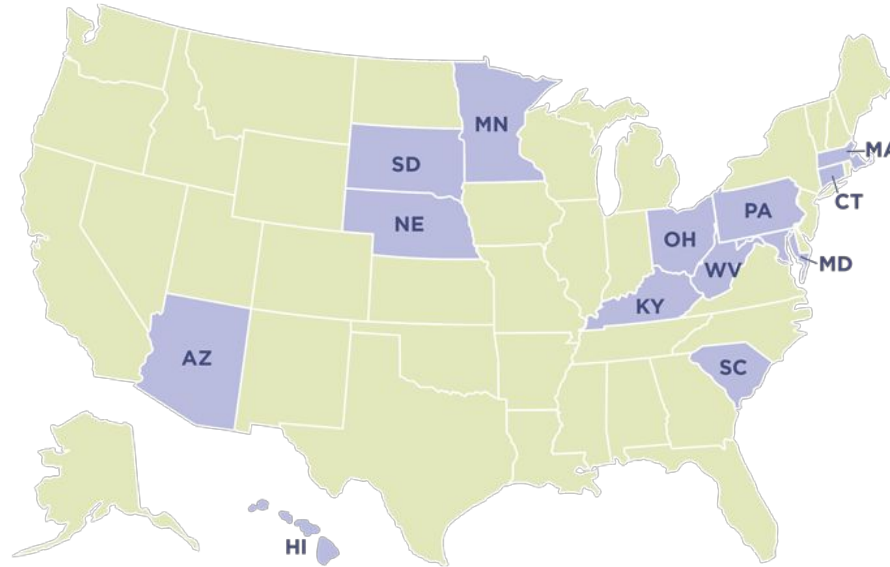
- Brief overview of the Nebraska Statewide Family Engagement Center (NE SFEC)
- NE SFEC Key Initiatives
- Asset Mapping



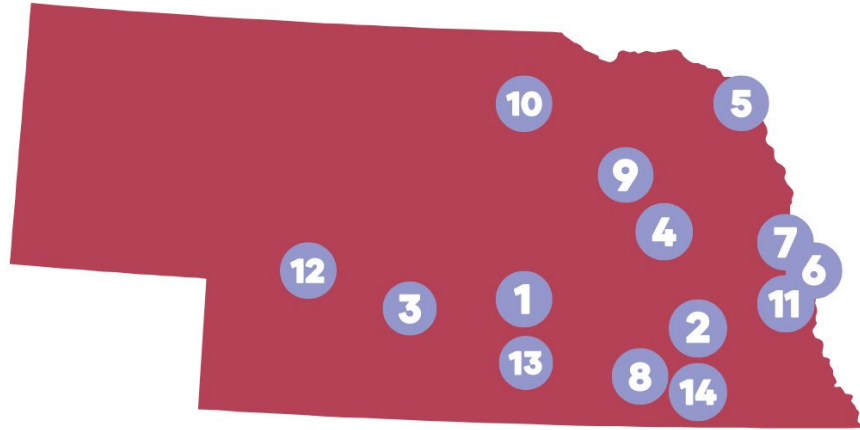
Nebraska Statewide Family Engagement Center (NE SFEC)



- U.S. Department of Education five-year grant (2018 - 2023)
- One of 12 current SFECs; serving students (preK - 5th grade) and families who are furthest from opportunity
- **Purpose:** Establish system of evidence-based family engagement practices



NE SFEC: Partners



- | | |
|------------------------------------|---------------------------------|
| 1. Grand Island Public Schools | 8. Crete Public Schools |
| 2. Lincoln Public Schools | 9. Madison Public Schools |
| 3. Lexington Public Schools | 10. O'Neill Public Schools |
| 4. Schuyler Public Schools | 11. Bellevue Public Schools |
| 5. South Sioux City Public Schools | 12. North Platte Public Schools |
| 6. Omaha Archdiocese School | 13. Hastings Public Schools |
| 7. Omaha Public Schools | 14. Beatrice Public Schools |



nebraskachildren
AND FAMILIES FOUNDATION



NE SFEC: Key Initiatives

- Family Literacy
- Professional development
- Monthly PLC's
- Book distribution
- Quarterly Nebraska Cafe
- Quarterly advisory board meetings

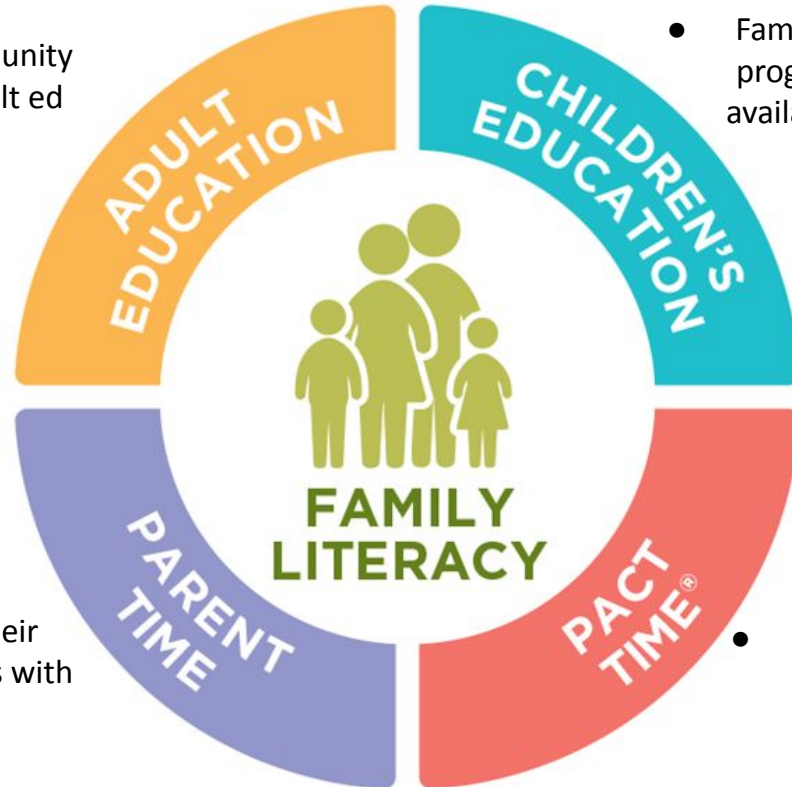


Trauma-Informed Strategies in the Adult Education Classroom

Thursday, April 14
3 p.m. ET, 2 CT, 1 MT, 12 PT



What asset mapping looks like in Family Literacy



- Identifying community partners for adult ed instruction

- Finding a meeting space for the classroom outside of the school

- Finding outside expertise on subjects requested by participants

- Parents share their expertise and skills with the class

- Families learn about the programs and resources available to their children

- Engage families in actively choosing what their child will participate in

- Share resources for family activities outside the classroom

- Parent's acquire knowledge to plan and facilitate their families involvement with community resources



What is Asset Mapping?



“Asset mapping is a systematic process of cataloging

- key services
- benefits, and
- resources within the community, such as
 - individuals’ skill sets,
 - organizational resources,
 - physical space,
 - institutions,
 - associations, and
 - elements of the local economy.”

Source: www.ruralhealthinfo.org



Why?

Asset Mapping helps to identify:

- community strengths
- resources
- Underutilized programs or facilities
- Overlooked skills

That can lead to:

- Increased pride & ownership in the community & program
- Strategies to build on existing resources
- Utilize existing resources in new places and ways

Who?



An asset mapping team could include a cross section of your community partners, like:

- School employees
- Business leaders
- Parents
- Young professionals
- Retirees in the neighborhood
- Members of the population you serve!



When?



Early...

Asset Mapping should be done as soon as you are able or aware as it can inform much of what you do and how you collaborate with other community programs.

and often!

Resources and programs come and go with the passage of time and the availability of funding. It is a good idea to review your asset map yearly to ensure it is up to date.



How? Or I have an asset mapping team. Now what?

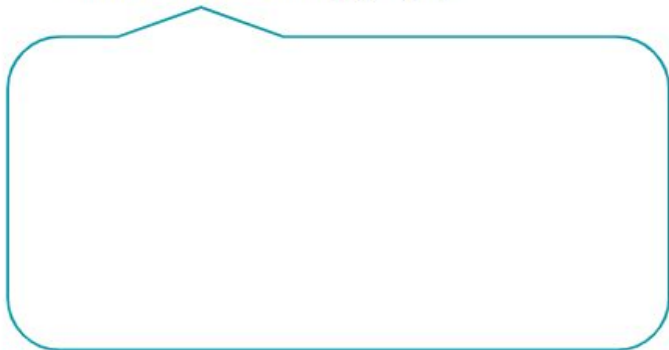


- Each person create a list of their personal assets that would help grow & sustain programming
- Each person list the assets they think are available in their community
- Take turns answering the following questions aloud. Have someone record the answers.
 - What do you value most in your community?
 - What are the strengths/assets of your community?
 - What groups/organizations/faith-based communities are you a member of?
 - Does anyone in your family or friend group work at or own any business that can help with the growth or sustainability of the program?
 - What special skills/talents do you possess that would benefit the program?
- Look at the answers and discuss ways they can aid in growth & sustainability.
- Put the resources listed into a usable format, like the template provided.
- Review the lists and answer the following questions:
 - What surprises you?
 - Are all assets materials or goods?
 - Is there anything missing?
- Create an action plan utilizing the resources you have identified.

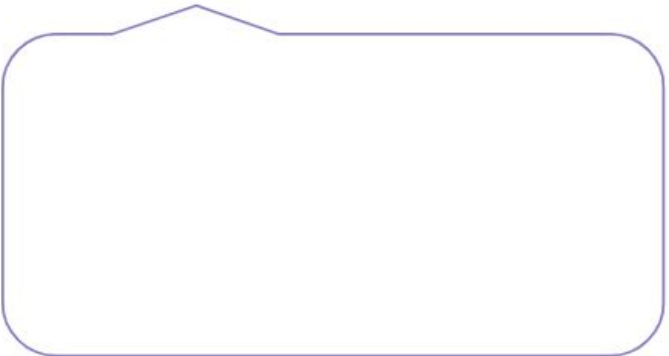


The “How” in Action

1. Who could we include in our Asset Mapping work group?

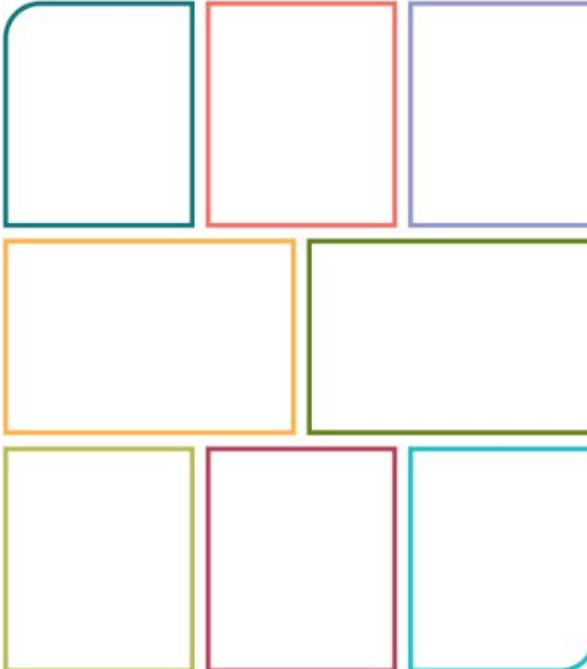


2. What resource categories should we include on our Asset Map?



Create Your Own Community Asset Map Template National Center for Family Learning

3.



(NCFL, 2021)

4. Target date for Asset Map completion or review _____

Contact Us



Jessica Boren

jboren@familieslearning.org

402-314-8861

Leesa Kraeger

lkraeger@familieslearning.org

402-651-6412

<http://www.nebraskafec.com/>

Hannah Van Horn Pastwa

hvanhorn@familieslearning.org

719-649-5283

Monica Huber

mhuber@familieslearning.org

719-404-6813

<https://www.familieslearning.org/>

